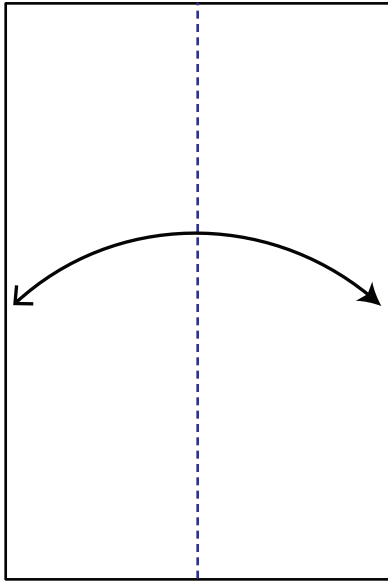


# PUSSYHAT

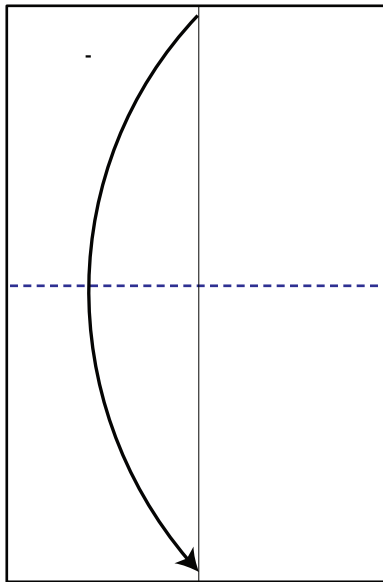
Design and Diagram by Beth Johnson

Difficulty level: High Intermediate (an easier version is available on the last page)  
 Paper: Single color, rectangle (2:3, 3:4, A4/letter all work, exact ratio not important)  
 To wear: A2 paper (16.5" x 23.4") will fit larger heads. For smaller heads, shorten the width of the paper by an inch or two (15" x 23.4" fits me).

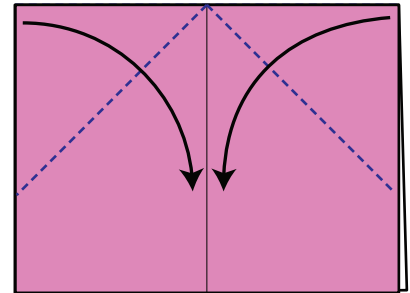
Inspired by the Women's March on Washington: [www.womensmarch.com](http://www.womensmarch.com), and the Pussyhat Project: [www.pussyhatproject.com](http://www.pussyhatproject.com). Dedicated to awesome women everywhere.



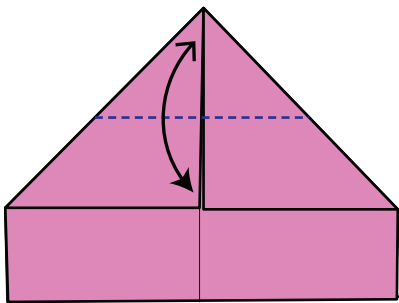
1. Fold and unfold.



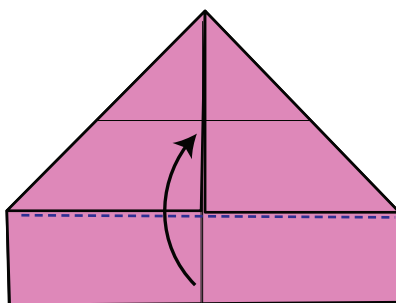
2. Fold in half.



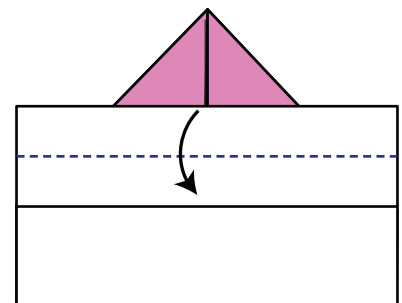
3. Fold corners to center.



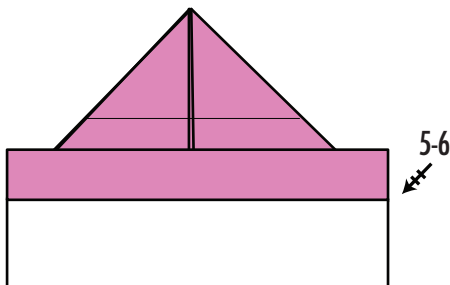
4. Fold and unfold



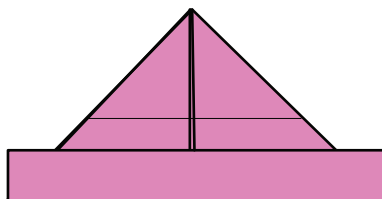
5. Fold up edge, top layer only.



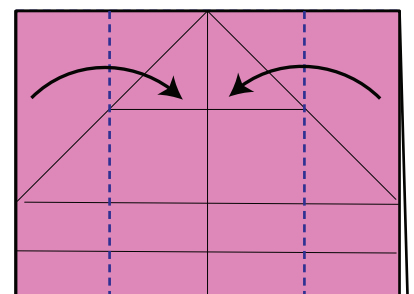
6. Fold down edge.



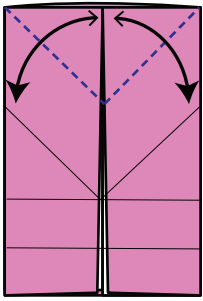
7. Repeat steps 5-6 behind.



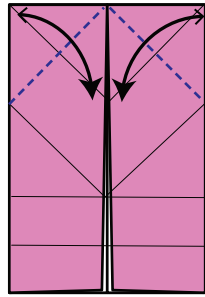
8. Result. Unfold to step 3.



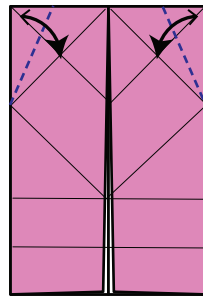
9. Fold edges to center, through all layers.



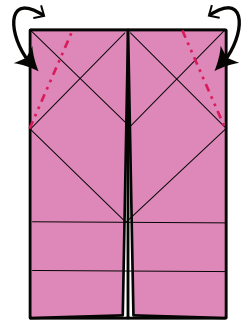
10. Fold and unfold, top layer only.



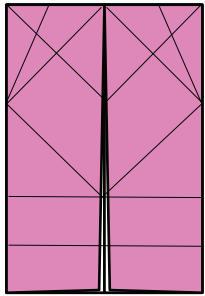
11. Fold and unfold through all layers.



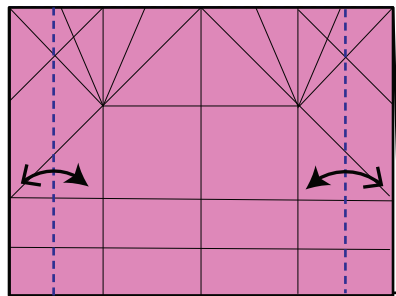
12. Valley fold through all layers. Unfold.



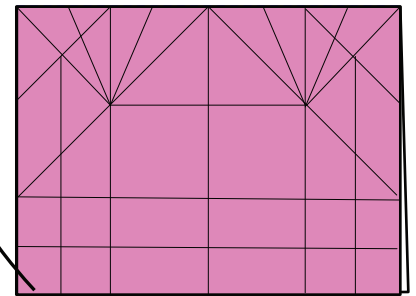
13. Mountain fold through all layers (reverse direction of creases from step 12). Unfold.



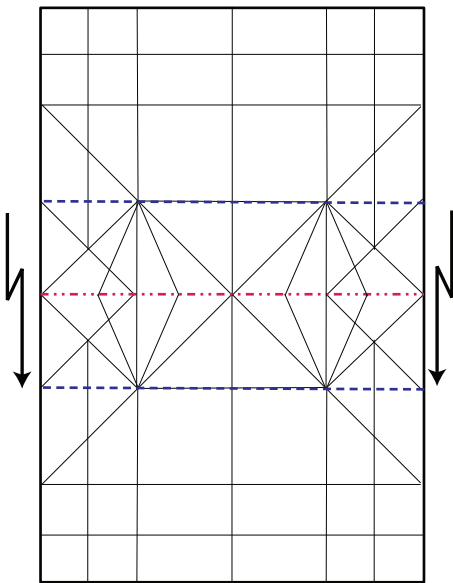
14. Unfold to step 3.



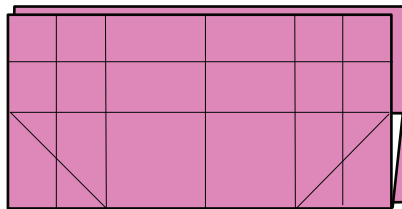
15. Valley fold through both layers and unfold.



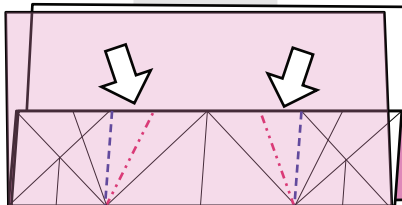
16. Unfold.



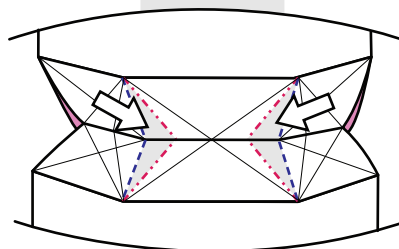
17. Pleat fold.



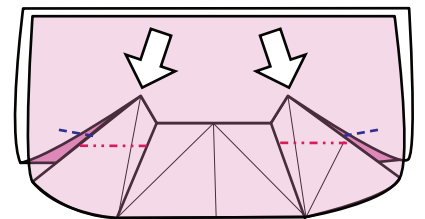
18a. Result.



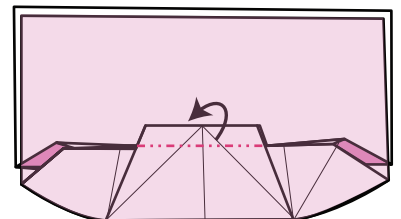
18b. Result with top layer transparent. Open sink along existing creases, on pleat inside model. Model will not lay flat.



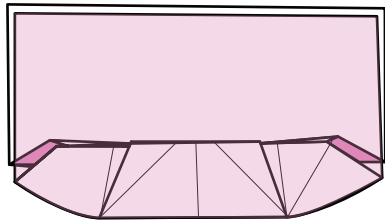
18c. View of collapse from inside model.



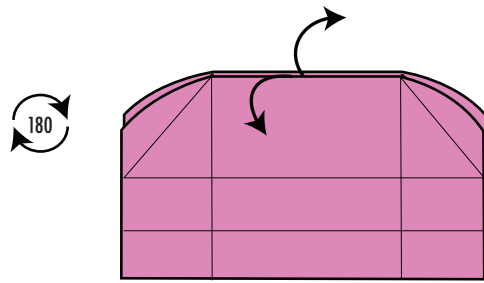
19. Result. Model will not lay flat. Inside reverse folds, along existing creases, working on pleat inside the model.



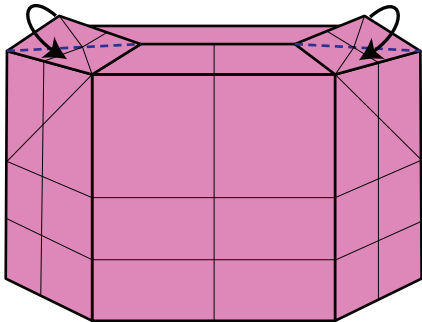
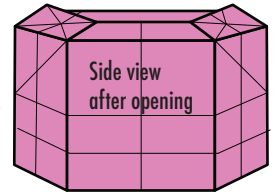
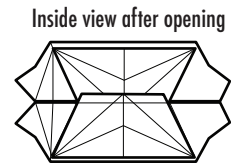
20. Mountain fold the top of the pleat that is inside the model.



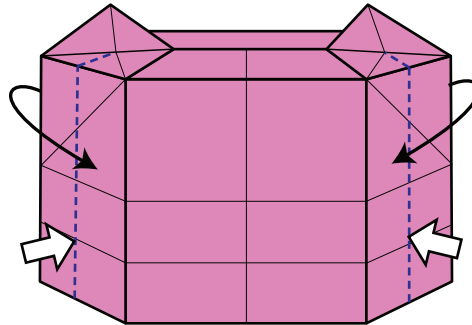
21. Result. Rotate model 180 degrees.



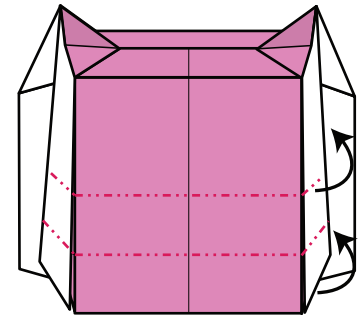
22. Spread model open, partially unfolding the crease from step 21. The model will now be three dimensional.



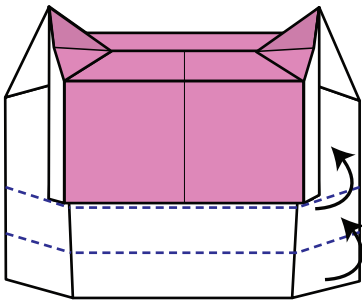
23. Ear flaps should be pointing forward. Fold flaps forward if they are backwards.



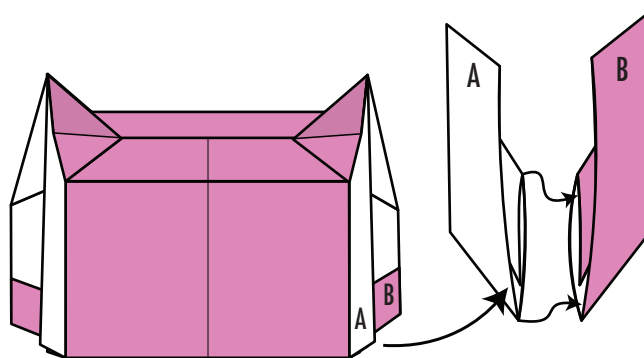
24. Push sides in along existing creases, folding both front and back layers forward. The hat will start forming a box shape.



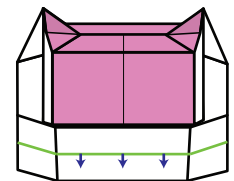
25. Roll the bottom flap with two mountain folds, along existing creases.



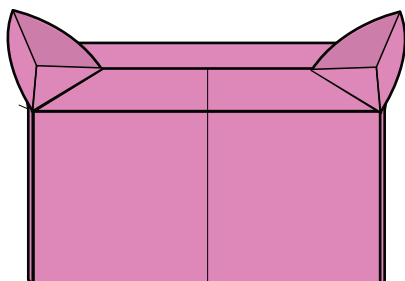
26. Roll the back flap with two valley folds (as viewed from the front, both edges are getting rolled inside model).



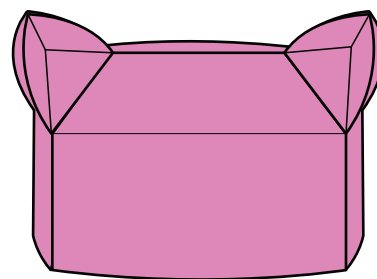
27. Result. Lock model by sliding the rolled edge A into B.



Hint: If the fit is too tight, you can try to make more room by moving (slightly) the first crease of edge B towards the raw edge of the paper.



28. Result. Round the bottom edge to give the hat a more rounded shape.

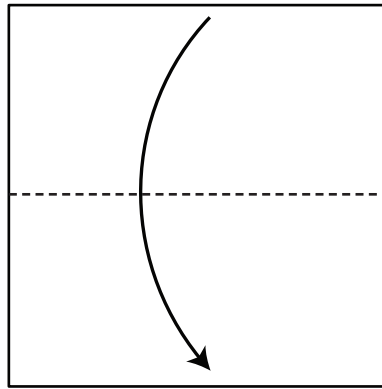
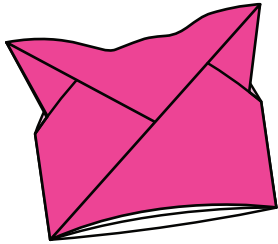


29. Finished!

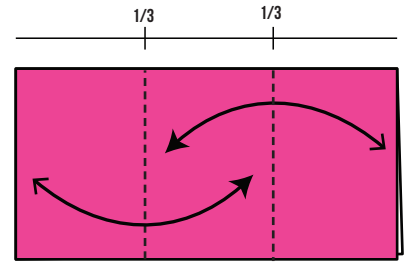
# PUSSYHAT JR.

Design and Diagram by Beth Johnson

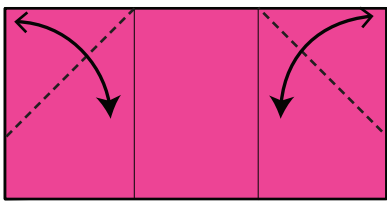
An easier version! I recommend 10" square paper or larger. Not designed for wearing.



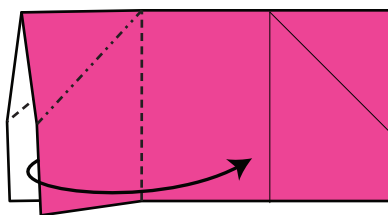
1. Valley fold in half.



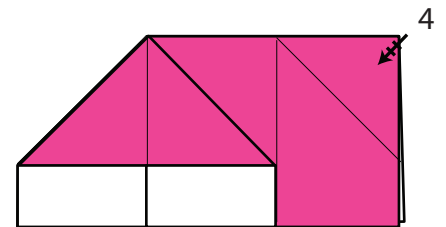
2. Valley fold into thirds. Unfold.



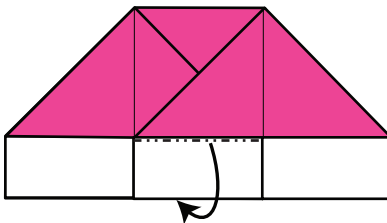
3. Fold and unfold corners.



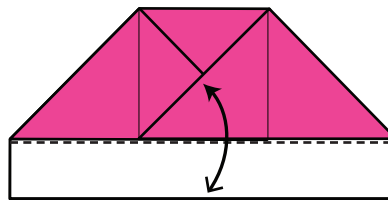
4. Squash fold.



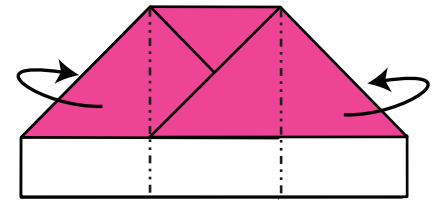
5. Repeat step 4 on the other side.



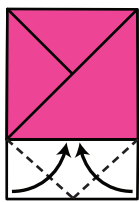
6. Mountain fold flap inside.



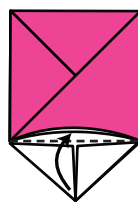
7. Valley fold and unfold.



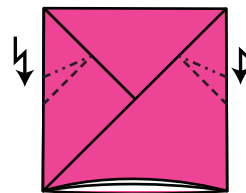
8. Mountain fold side flaps behind.



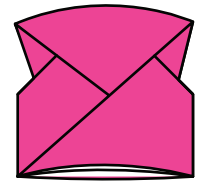
9. Valley fold corners.



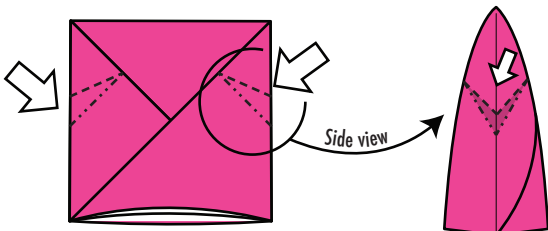
10. Tuck flap inside the hat.



11. Crimp folds through all layers.

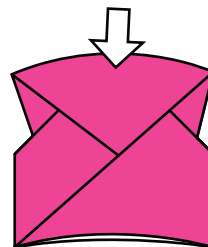


12. Result. Unfold crimp folds.

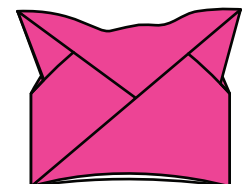


13. Open Sink corners.

13a. Push in the grey area. Model won't lay flat.



14. Push in the top to shape.



15. Finished!